



**McCloskey
Environmental**





McCloskey
Environmental



SHREDDERS
SCREENERS
TROMMELS
STACKERS



WHO WE ARE.

EXPERIENCE, EXPERTISE, SOLUTIONS

We are McCloskey Environmental. An evolution of waste recycling equipment designed to solve real world challenges. Every customer experience begins and ends with support from people at a company with a heritage of strong values 35+ years of knowledge.

As the world around us changes and new challenges arise, we believe we have a greater responsibility than ever before, we recognise that we have a role to play in the Environmental sustainability of our planet.

Headquarters in N. Ireland, renowned worldwide for its expertise in producing high quality, cost effective equipment for the world market. We are developing smarter solutions for our partners across the globe to facilitate a sustainable future.

Designing, manufacturing and delivering a complete line of environmental equipment; Shredders, Trommels, Screeners and Stacker Range.

The products are used in a wide range of industries; recycling, aggregates, landscaping, infrastructure and road building, construction and demolition, mining, and waste management.

McCloskey™ is the world's leading recycling manufacturer and has **pioneered trommel design** and innovation. Over the past 35+ years, the Trommel and Stacker range has established a **proven reliability** in construction and demolition, topsoil, compost, waste recycling, and many other large screening applications.



OUR GROWTH

McCloskey has developed significantly in recent years, bringing companies into the group, through acquisitions has been a big part of this. With a global presence on five continents, we are committed to working towards a smarter approach to waste.

McCloskey Environmental was established in 2021, this has been an instrumental move in continuing to develop and invest in our best-in-class equipment, worldwide, with consistently high service levels and customer satisfaction.

OUR VISION

McCloskey Environmental partners with companies that have the expertise to deliver not just products, but solutions that maximise profit and deliver exceptional performance.

TRACKED SHREDDER

← S-200

The McCloskey ES-200 is a primary shredder for operations that require high capacity, durability, and the ability to process tough, bulky materials. ES-200 provides a cost-effective solution to reduce, shred, and process waste materials with ease.

It features a robust table design that can achieve high throughput capacity across multiple applications with high performance, durability and efficiency.



FEATURES

- Aggressive 9-5-5 shaft configuration
- Intelligent control system
- Variable speed feed conveyor
- 4 Meter tracks for superior manoeuvrability and stability
- CAT9.3B 310Kw (416HP) Stage V/Tier 4 Final*
- Fuel efficient Hydraulics system
- User Friendly Hydraulic Controls
- Hydraulic Tipping Hopper
- Quick Change Shaft Cassette Design
- Double Hydrostatic drive transmission

DIMENSIONS AND CAPACITIES

Transport Height	3.07m (10'-1")
Transport Length	8.77m (28'-9")
Transport Width	2.65m (8'-8")
Weight	26,000Kg (57,320 Lbs.)
Working Max Length	11.05m (36'-3")
Working Max Height	3.64m (11'-3")
Stockpile Height	3589mm (11' 9")

* Engine specifications vary. Check with your dealer.

SHREDDER RANGE

← S-250

The ES-250 is a tracked primary shredder capable of effectively and reliably shredding virtually any type of material. Designed to meet the needs of operators in which the incoming materials vary greatly in terms of size, composition, and difficulty to shred.

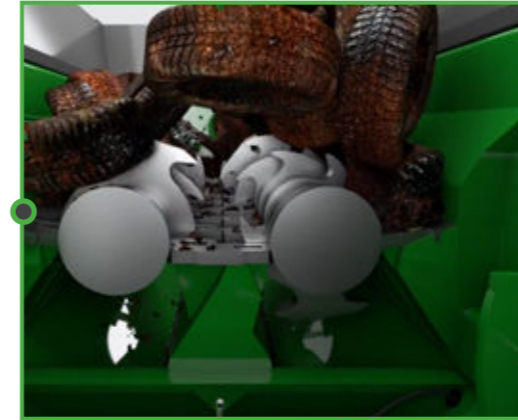
The interaction between the rotating knives on the dual shafts running asynchronously in both directions ensures the input material is constantly moving to prevent bridging and maximizing shredding efficiency.



DIESEL



ELECTRIC POWER



FEATURES

- Aggressive 8 & 10 knife, heavy duty cutting table
- Intelligent control system
- Variable speed main conveyor
- 4m tracks for superior manoeuvrability and stability
- Volvo D13 380KW (510HP) stage v / tier 4 Final.*
- Fuel efficient hydraulics system
- User friendly hydraulic controls
- Double hydrostatic drive transmission

DIMENSIONS AND CAPACITIES

Length - Working (Max)	15.1m (49' 7")
Height - Working (Max)	3.5m (11' 6")
Length - Transport	9.54m (31' 4")
Width - Transport	3.01m (9' 11")
Height - Transport	3.50m (11' 6")
Maximum Production Rate	100 TPH (110 USTPH) (Material Dependent)
Machine Weight	35,000 Kg (77,160 lbs)

CUTTING TABLE

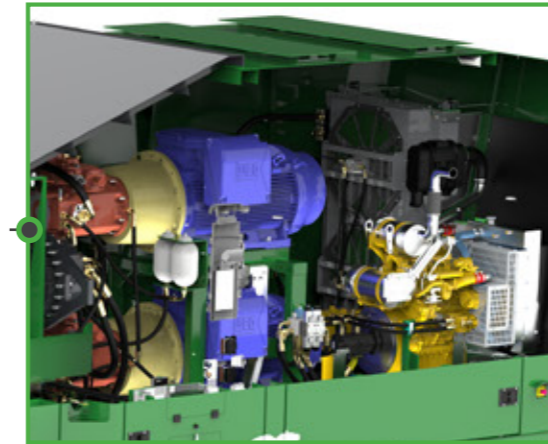
Number of shafts	2
Rotating speed	16-41/27-56 RPM
Number of knives	8/10
Number of counter knives	16/20
Cutting area	1690mm x 2480mm (95" x 79")
Knife type	Sheer Table
Chamber weight	16,000 Kg (35,270 lbs)

* Engine specifications vary. Check with your dealer.

TRACKED SHREDDER

← S-250e

The McCloskey ES-250e shredder is a robust, efficient solution designed for a wide range of shredding applications. Built with sustainability in mind, this electric-powered shredder delivers high performance while reducing environmental impact. It's an ideal choice for companies looking to enhance their processing capabilities while prioritising sustainability and operational efficiency.



FEATURES

- Aggressive 8 Knife Heavy Duty cutting table
- Intelligent electrical Control Unit
- Variable Speed main conveyor
- 4m tracks for superior manoeuvrability and stability
- x2 200Kw Electric Motors
- User friendly Hydraulic Controls
- Double Hydrostatic Drive Transmission
- Auxiliary engine for tracking and set up functions

DIMENSIONS AND CAPACITIES

Motors	WEG W22 IE3 (X2)
Transport Height	3.50m (11'-6")
Transport Length	9.54m (31'-4")
Transport Width	3.01m (9'-11")
Weight	35,000Kg (77,160 Lbs.)
Working Max Length	15.1m (49'-7")
Working Max Height	3.5m (11'-6")
Stockpile Height	3476mm (11' - 5")

TRACKED SHREDDER

← S-200



MATERIAL APPLICATIONS.

ES-250 FEEDING A ER-230 FLEX FLOW WITH PICKING STATION

ES-250 combines our marketing leading ER-230 and bespoke flex flow screen box to provide a unique approach to screening. Designed to deal with tricky products such as electronic scrap, plastics, incineration slag and building rubble which can clog up the screen panels of conventional screening technology.

The ER-230 flex flow will effectively process but is not limited to the following materials; RDF, WOOD, WEE, C&I, GLASS, TOPSOIL, and COMPOST.

This particular example could be used in a reclaimed landfill application, where a wide range of material types will be found. The ES-250 acts as the primary shredder giving a more pickable product size downstream, whilst the ER-230 effectively removes the fines and dirt, increasing productivity and reducing wear and operational costs on the rest of the processing plant.



ES-200 FEEDING A ET-620

Designed and engineered to meet the most demanding recycling conditions, McCloskey Environmental Trommels offer robust and reliable solution to a varying list of applications.

WASTE PROCESSING

Separation of fines from waste streams is critical in the waste recycling production line. It provides a more productive environment for the staff on the picking line to successfully sort recyclables into bays, increasing efficiency & reducing costs. Using an ES-200 shredder at the front end will reduce raw bulk material to manageable size and fines removed with ET-620 Trommel.

WOOD PROCESSING

Our Trommels are also suitable for compost & waste wood applications where oversize material needs to be removed following the shredding process. Using an ES-200 at the front end of a wood or compost processing application, gives a uniform size product produced by the shredder, metal contamination is removed with the on board magnet, and the ET-620 Trommel removes the unwanted fines.



SCREENERS

ER-155

HIGH CAPACITY LONG HOPPER SCREENER

The ER-155 High Energy Screener is a tough, robust screening tool designed to cope with the heaviest of applications. New for this ER-155 scalping screener, are longer hopper and an extended tail conveyor. This provides maximum load flexibility to customers and accommodates a larger variety of loaders and can work in a variety of sites around the world.

No More Slow Loading! The ER-155 is designed for use with larger loaders. The 16ft target is 25% larger, allowing for more material and no spillage, making this ER-155 an excellent mobile solution for materials handling operations.



DIESEL/HYDRAULICS



DUAL POWER



FEATURES

- 5' X 16' heavy duty high energy 2 bearing screenbox
- Trademark to HARDOX™
- Direct feed HARDOX™ lined hopper
- Integrated hydraulic folding stockpiling conveyors
- Fast on site setup time - 10 minutes
- Screen raises at lower end for easy bottom deck access
- Track mobile

DIMENSIONS AND CAPACITIES

Engine	98KW (130HP) Diesel
Transport Height	3.53m (11' 7")
Transport Length	15.30m (50' 2")
Transport Width	3.54m (11' 7")
Weight	36,100 Kg (79,600 lbs)
Stockpile Height (Extended Tail Conveyor)	3.75m (12' 3")
Stockpile Height (Side Fines Conveyor)	3.96m (13')
Stockpile Height (Side Mid Conveyor)	3.60m (11' 10")
Screenbox Dimensions	5' x 16' (155 ft²)

Flex-Flow screens are built to take on the toughest materials, screening effectively without build-up, blinding, and clogging.

The ER-155 and ER-230 Flex-Flow models work in tandem with other on-site equipment. With their fast set-up time and ability to move around job sites, the screeners are uniquely suited to projects where manoeuvrability is key.

- Designed for efficient screening
- Optimum recycling and processing of waste
- Maximum screening quality,
- Optimal return on investment
- Maximum performance
- Powerful & flexible

SCREENERS

ER-230

HIGH CAPACITY LONG HOPPER SCREENER

The ER-230 High Energy Screener is one of the most versatile and efficient mobile screeners around the world today.

Designed to provide uncompromising production in difficult applications. The ER-230 is capable of operating as a stand-alone plant producing finished product, or as a scalping recycled material to remove fines for picking station.

McCloskey Environmental's powerful High Energy Screener delivers higher outputs and a high-quality screened product with maximum efficiency.



DIESEL/HYDRAULICS



DUAL POWER



FEATURES

- 6' X 20' heavy duty high energy 2 bearing screenbox
- Direct feed lined hopper
- Travel out fixed walkways
- Fast on site setup time - 10 minutes
- Integrated hydraulic folding stockpiling conveyors
- Screen raises at lower end for easy bottom deck access
- Service standing room inside powerpack

DIMENSIONS AND CAPACITIES

Engine	168KW (225HP) Diesel
Transport Height	3.50m (11' 5.8")
Transport Length	16.97m (55' 8")
Transport Width	3m (9' 10")
Weight	37,200 Kg (82,000 lbs)
Stockpile Height (Tail Conveyor)	3.83m (12' 6")
Stockpile Height (Mid Product Conveyor)	3.66m (12')
Stockpile Height (Fine Product Conveyor)	4.10m (13' 5.3")
Screenbox Dimensions	6 x 20 (120 ft²)

SCREENER RANGE

DS-7000

TRACKED DISC SCREENER

The EDS-7000 is a tracked disc screener capable of effectively and reliably screening various types of material. The EDS-7000 is designed to meet the needs of customers who have a requirement to size the shredded materials or remove fines to give a clean product.

The patented disc screen technology sees a series of hexagonal or octagonal disc shafts with a flat profile. Thanks to this particular shape, the material slides on the screen discs and is subject to an up and down motion that separates the waste.



FEATURES

- 7m total screen length- F1 2.5m / F2 4.5m
- Full on board diesel electric generator- Can also be powered by mains
- Variable speed controls on screen deck and conveyors
- KOHLER 55KW T4F/EU Stage V Engines
- 4m tracks for superior manoeuvrability and stability
- 2F/3F product production
- User friendly controls
- Disc screening technology

DIMENSIONS AND CAPACITIES

Length - Working (Max)	15.5m (50' 8")
Height - Working (Max)	4.25m (13' 9")
Length - Transport	8.74m (28' 7")
Width - Transport	2.55m (8' 4")
Height - Transport	3.10m (10' 2")
Maximum Production Rate	200TPH (Material Dependent)
Weight	23,000 Kg (50,700 lbs)
Average Fuel Consumption	10 l/ hour (2.6 US Gal)



TROMMEL RANGE

← T-620

The ET-620 is a tracked trommel designed specifically to meet the needs of the global market. The ET-620 has been designed to meet the needs of operators dealing in wood waste, compost, LightC&D waste and general MSW.

The interchangeable drum is removable from the side of the machine via a side opening door and retractable feed conveyor. The machine has been designed to accept screening drums from other manufactures allowing the ET-620 to be effortlessly intergarted into existing fleets . There is an intelligent control system designed to optimize throughput without causing stalling or slowing of the drum screen.



DIESEL/HYDRAULICS



DUAL POWER



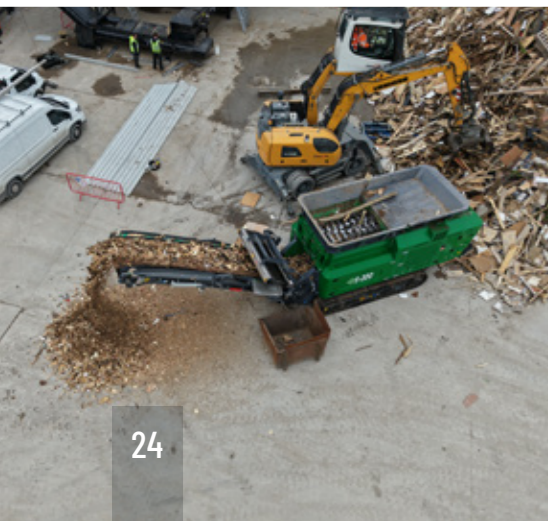
FEATURES

- Hydraulically adjustable drum brushes
- Intelligent control system
- Variable speed feed conveyor
- 4M tracks for superior manoeuvrability & stability
- Hydraulically adjustable track frame for increasing ground clearance
- CAT 3.6 100KW (136HP) Stage V / Tier 4 Final*
- Fuel efficient Hydraulics system
- User Friendly Hydraulic Controls
- Hydrostatic drive transmission
- Adjustable transfer conveyor divert chute
- Chain drive drum
- Hydraulically adjustable conveyor angle

DIMENSIONS AND CAPACITIES

Transport Height	3.38m (11' 1")
Transport Length	11.68m (38' 4")
Transport Width	2.99m (9' 10")
Weight	24,000 Kg (52,910 lbs)
Height (Working)	3.64m (11' 11")
Length (Working)	15.42m (50' 7")

* Engine specifications vary. Check with your dealer.



STACKER RANGE

←↻ C-50

HIGHLY MOBILE WHEELED STACKER

The EC-50 is a light duty mobile stockpiling conveyor that has been designed for high capacity stockpiling operations. The conveyor is perfect for both material stockpiling or material transfer between machines.



ELECTRIC POWER



FEATURES

- 800mm (32") wide heavy duty 50' long conveyor
- Large feed hopper
- Electric powered
- Hydraulic / electric drive available
- Fast on site setup time - 5 minutes
- Feedboot extensions

DIMENSIONS AND CAPACITIES

Transport Height	3.04m (9' 11")
Transport Length	11.99m (39' 4")
Transport Width	2.49m (8' 2")
Weight	4,100 Kg (9,020 lbs)
Stockpile Height @ 22 degrees	6.365m (20' 11")
Stockpile Capacity @ 22 degrees	384 cu. m (502 cu. yds.)
Maximum Production Rate	400 TPH (440 USTPH)

STACKER RANGE

←↻ C-65T

HIGH CAPACITY STOCKPILING

The EC-65T sets the standard for high capacity, high mobility stackers. The EC-65T comes with an impressive array of options, including a large hopper, full-length flashing, an easily accessible engine bay, an impact section under the hopper and an adjustable hopper height. When the EC-65T arrives at a job site, it takes only a few minutes to set up and get to work. As is the case with all McCloskey stackers, the EC-65T features a setback design for maximum stockpiling.

At 65' long, the EC-65T is the entry point for McCloskey tracked stackers, which are also available in 80' and 100'.



DIESEL/HYDRAULICS



DUAL POWER



FEATURES

- Hydraulic folding head section for transport minimizing setup time
- Hydraulically adjustable discharge height up to 8.4m
- Hydraulically Adjustable feed height
- 3.5m tracks for superior manoeuvrability and stability
- 50KW giving a rating of up to 500 TPH (550 USTPH)
- Fuel efficient hydraulics system
- User friendly hydraulic controls
- Hopper HARDOX™ liners
- Heavy duty impact bed

DIMENSIONS AND CAPACITIES

Engine	CAT 2.2 50KW (67HP) stage V / Tier 4 Final*
Length - Transport	12.1m (39' 9")
Width - Transport	2.34m (7' 8")
Height - Transport	2.5m (8' 3")
Weight	10,500 Kg approx. (23,148 lbs)
Stockpile Height	7.88m (25' 10")
Stockpile Capacity	902m ³ (1180 yd ³)
Maximum Production Rate	500 TPH (550 USTPH)

* Engine specifications vary. Check with your dealer.

STACKER RANGE

←↻ C-80T

HIGHLY MOBILE TRACKED STACKER

The EC-80T is designed to allow operators to stockpile/transfer material directly from shredding and recycling plants it offers the perfect solution to all your material handling needs. It offers the flexibility and mobility needed to ensure that the stockpiling process is as fast and efficient as possible, it eliminates the use of a loader and also the double handling of materials.



DIESEL/HYDRAULICS



DUAL POWER



FEATURES

- Hydraulic folding heading section for transport minimizing setup time
- Hydraulically adjustable discharge height up to 11m
- Hydraulically adjustable feed in height to compliment shredding and recycling plants
- 4m tracks for superior manoeuvrability and stability
- Fuel efficient hydraulics system
- User friendly hydraulic controls
- Feed boot HARDOX™ liners
- Heavy duty impact bed

DIMENSIONS AND CAPACITIES

Engine	CAT 2.2 50KW (67HP) stage V / Tier 4 Final*
Length - Working (Max)	23.5m (77' 3")
Height - Working (Max)	10.8m (37' 6")
Length - Transport	16.33m (53' 7")
Width - Transport	3.35m (11')
Height - Transport	3.56m (11' 8")
Over Hang - Stockpile	5.44m
Stockpile Height	9.3m (30' 5")
Maximum Production Rate	500 TPH (550 USTPH)

* Engine specifications vary. Check with your dealer.

STACKER RANGE

←↻ C-100T

HIGHLY MOBILE TRACKED STACKER

The EC-100T tracked stacker reaches new heights increasing the capacity of production operations, and delivering 800TPH of stocked material. Offering the flexibility and mobility needed to ensure that the stockpiling process is as fast and efficient as possible, it eliminates the use of a loader and also the double handling of materials.



DIESEL/HYDRAULICS



DUAL POWER



FEATURES

- Hydraulically adjustable discharge height up to 12m
- Hydraulically adjustable feed in height to compliment shredding and recycling plants
- 4m tracks for superior manoeuvrability and stability
- Engines giving a rating of up to 800 TPH (880 USTPH)
- Fuel efficient hydraulics system.
- User friendly hydraulic controls
- Heavy duty impact bed

DIMENSIONS AND CAPACITIES

Engine	Engine: CAT 3.6 100Kw / 136HP stage V / tier 4 final
Length - Transport	11.8m (38' 7")
Width - Transport	2.29m (7' 5")
Height - Transport	2.57m (8' 4")
Length - Working (Max)	30.5m (100')
Height - Working (Max)	13m (42' 6")
Maximum Production Rate	800 TPH (880 USTPH) @ 23° angle

STACKER RANGE

← F-80

HIGH CAPACITY STOCKPILING

The EF-80 features a large feeder hopper that transfers material onto an 80ft conveyor. Designed to allow operators to stockpile/transfer material it eliminates double handling of materials.

The unit can also be compacted for transport on one low loader for easy site to site transport.



DIESEL/HYDRAULICS



DUAL POWER



FEATURES

- Dual hydraulic main drive system
- Hydraulic folding head section for transport minimizing setup time
- Hydraulically adjustable discharge height up to 10m
- 4m tracks for superior manoeuvrability and stability
- Fuel efficient Hydraulics system.
- User Friendly Hydraulic Controls
- Hopper extensions increasing capacity

DIMENSIONS AND CAPACITIES

Engine - Power Unit	CAT 3.6 - 100KW (136HP) - stage V tier 4 Final - 800TPH*
Transport Height	3.4m (11' 1")
Transport Length	19.4m (63' 6")
Transport Width	3.2m (10' 6")
Weight	24500 Kg (54,013 lbs)
Stockpile Height	9.6m (31' 5")
Stockpile Capacity	25.4m (83' 6")
Maximum Production Rate	800 TPH (880 USTPH)

* Engine specifications vary. Check with your dealer.



STACKER RANGE

← F-80R

TRACKED RADIAL FEEDER STACKER

The EF-80R features a large feeder hopper that transfers material onto an 80ft conveyor, all fitted to a slew ring assembly allowing for full 360° radial.

Designed to allow operators to stockpile/transfer material it eliminates double handling of materials. Its manoeuvrability makes this unit very versatile and therefore is ideal for barge loading and unloading, rail loading / unloading and stockpiling. The ability to move parallel enables the operator to manoeuvre the unit parallel to the vessel meaning the machine can crab alongside.

The unit can also be compacted for transport on one low loader for easy site to site transport.



FEATURES

- Hydraulic folding head section for transport minimizing setup time
- Hydraulically adjustable discharge height up to 10m
- Fuel efficient hydraulics system
- 4m tracks for superior manoeuvrability and stability
- User friendly hydraulic controls
- Dual hydraulic main drive system
- Remote rear stabilizing legs for easy operator use
- Remote radio tracking
- Hopper extensions increasing capacity

DIMENSIONS AND CAPACITIES

Engine	CAT 3.6 - 100KW (136HP) - stage V tier 4 Final - 800TPH*
Transport Height	3.4m (11' 1")
Transport Length	19.4m (63' 6")
Transport Width	3.2m (10' 6")
Overhang transport	7.2m (23' 9")
Weight	27,500 Kg approx. (60,627 lbs)
Working Max Length	6.2m (20' 3")
Working Max Height	10m (32' 10")
Stockpile Height	10m (32' 10")
Hopper Capacity	13m ³ (17 yd ³)
Maximum Production Rate	800 TPH (880 USTPH)
Radial	Full 360°

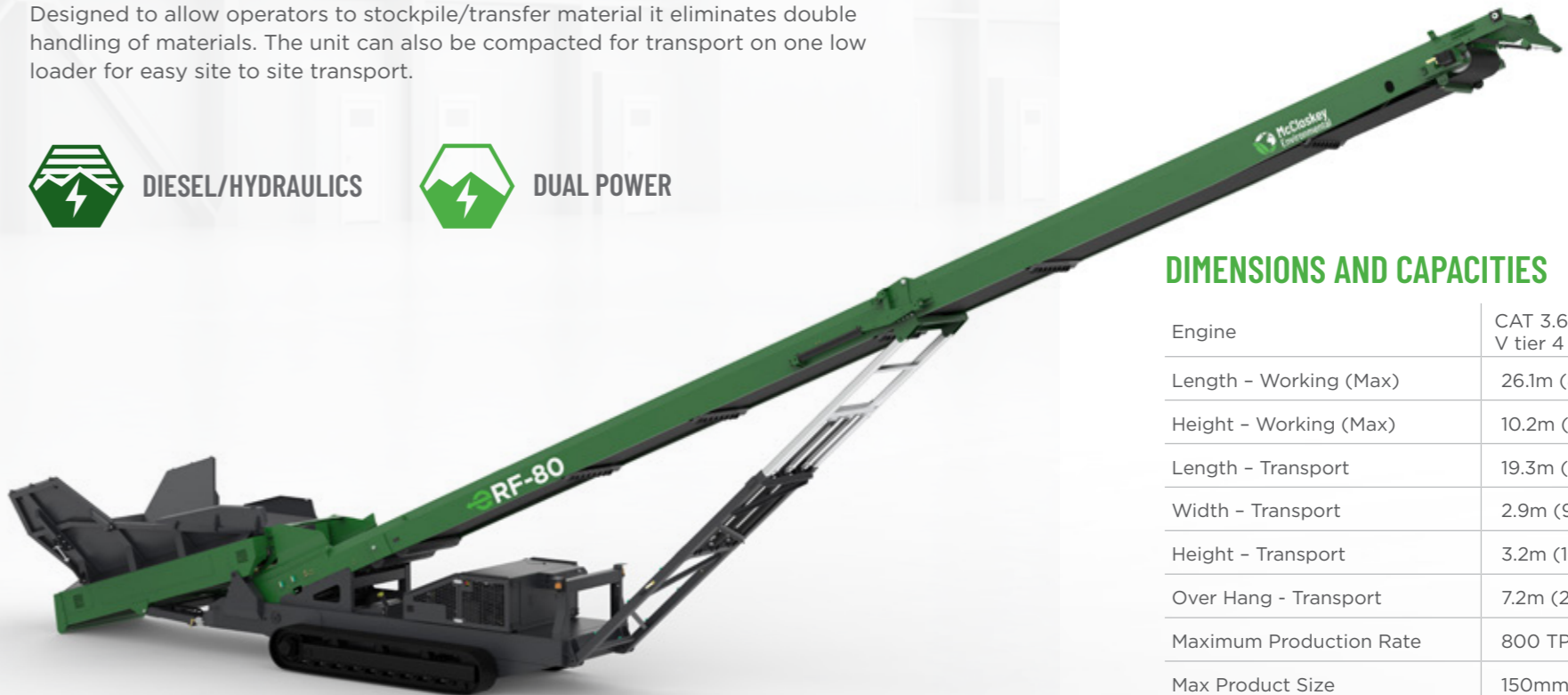
* Engine specifications vary. Check with your dealer.

STACKER RANGE

← RF-80

FEEDER STACKER

The ERF-80 feeder stacker features a large feeder hopper that transfers material onto an 80ft conveyor and provides a rear, low level feed option to operators. Designed to allow operators to stockpile/transfer material it eliminates double handling of materials. The unit can also be compacted for transport on one low loader for easy site to site transport.



FEATURES

- Dual hydraulic main drive system
- Hydraulic folding head section for transport minimizing setup time
- Hydraulically adjustable discharge height up to 10m
- 4m tracks for superior manoeuvrability and stability
- Fuel efficient hydraulics system
- User friendly hydraulic controls
- Hopper extensions for increasing capacity

DIMENSIONS AND CAPACITIES

Engine	CAT 3.6 - 100KW (136HP) - stage V tier 4 Final - 800TPH*
Length - Working (Max)	26.1m (85' 10")
Height - Working (Max)	10.2m (33' 7")
Length - Transport	19.3m (63' 4")
Width - Transport	2.9m (9' 5")
Height - Transport	3.2m (10' 6")
Over Hang - Transport	7.2m (23' 9")
Maximum Production Rate	800 TPH (880 USTPH)
Max Product Size	150mm (6") minus
Weight	24,500 Kg approx. (54,013 lbs)
Hopper Capacity	10m ³ (13 Yd ³)

* Engine specifications vary. Check with your dealer.



STACKER RANGE

← RF-80R

FEEDER STACKER

The ERF-80R feeder stacker features a large feeder hopper that transfers material onto an 80ft conveyor, all fitted to a slew ring assembly allowing for full 360° radial. Designed to allow operators to stockpile/transfer material, it eliminates double handling of materials. Its manoeuvrability makes this unit very versatile and makes it ideal for barge loading and unloading, rail loading / unloading and stockpiling, the ability to move parallel enables the operator to manoeuvre the unit parallel to the vessel meaning the machine can crab alongside.

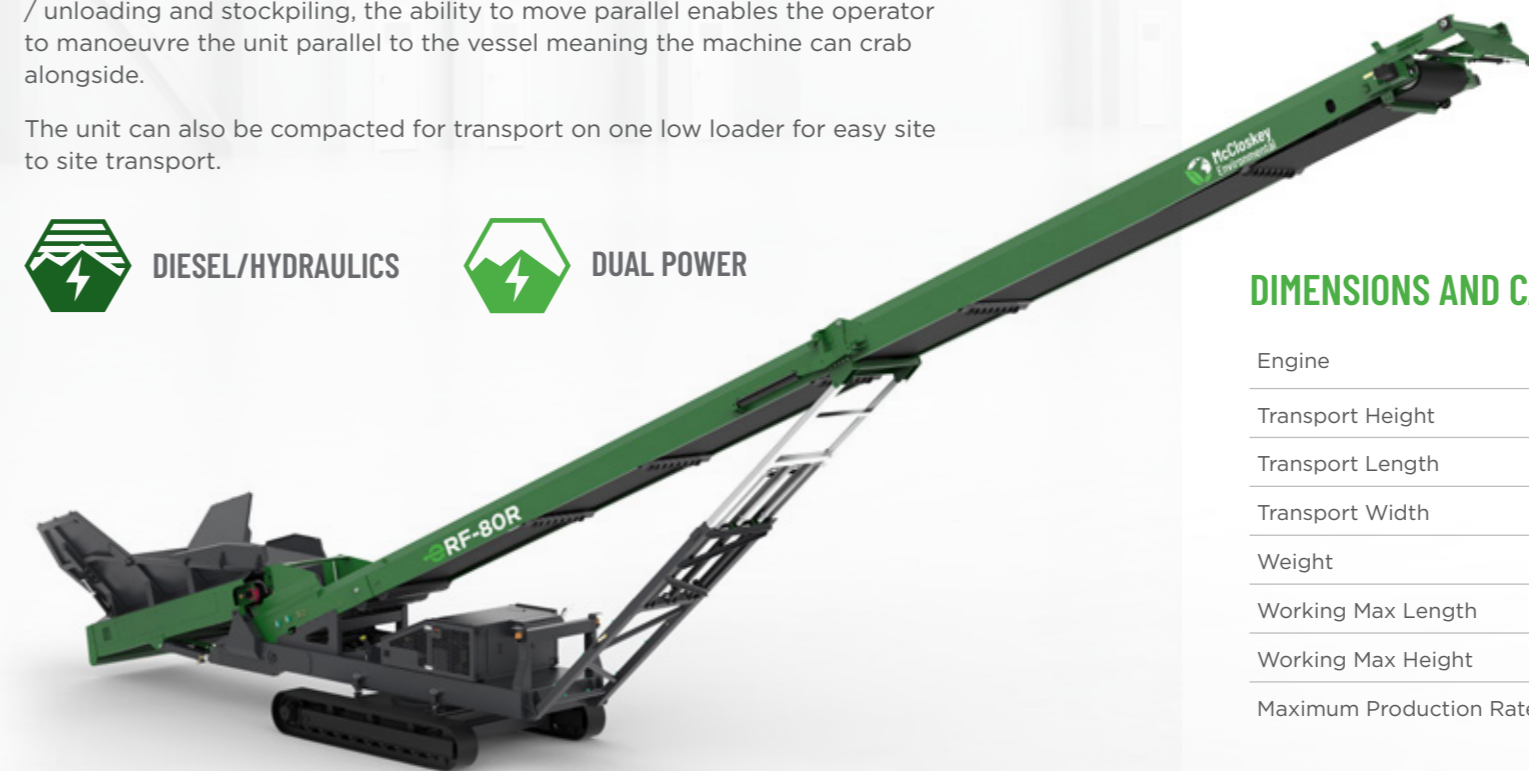
The unit can also be compacted for transport on one low loader for easy site to site transport.



DIESEL/HYDRAULICS



DUAL POWER



FEATURES

- Dual hydraulic main drive system
- Hydraulic folding head section for transport minimizing setup time
- Hydraulically adjustable discharge height up to 10m
- High powered slew gearbox and slew ring assembly
- Radio Remote as standard
- 4m tracks for superior manoeuvrability and stability
- Radio remote rear stabilizing legs for easy operator use
- Radio remote tracking
- Fuel efficient hydraulics system
- User friendly hydraulic controls
- Hopper extensions increasing capacity

DIMENSIONS AND CAPACITIES

Engine	CAT 3.6 - 100KW (136HP) - stage V tier 4 Final - 800TPH*
Transport Height	3.2m (10' 6")
Transport Length	19.4m (63' 7")
Transport Width	2.9m (9' 5")
Weight	27,500 Kg approx. (60,627 lbs)
Working Max Length	26.3m (86' 4")
Working Max Height	10.5m (34' 6")
Maximum Production Rate	800 TPH (880 USTPH)

* Engine specifications vary. Check with your dealer.

ENVIRONMENT COMMITMENT

The key factors underpinning our sustainability strategy



**RECRUITING
AND RETAINING
EXCELLENT
PEOPLE**



**DRIVING
POSITIVE
SUPPLIER
RELATIONSHIPS**



**FURTHER
IMPROVING
CUSTOMER
SATISFACTION**



**REDUCING
WASTE AND
INCREASING
RECYCLING**



**BEING AN
INNOVATOR AND
LEADING THE
WASTE INDUSTRY**



**BUSINESS
VALUE**

SUSTAINABLE WASTE MANAGEMENT

Sustainability is core to our overall business strategy, including sustainable waste management and we believe this makes us a better company to work for, to do business with, and to invest in.

The key factors underpinning our sustainability strategy.

Protecting the planet is no longer a choice, but an obligation.

We believe in a sustainable future and with the global engineering industry as our arena, we work together with our customers to turn this belief into reality for people everywhere.

McCloskey environmental will have a customer first attitude in order to ensure that our high quality machines have a more efficient & direct impact.

What makes us different is our approach to business.

Taking a proactive approach, we are unique in sharing our deep knowledge of waste management solutions, advising on how to best use our recycling products with designs tailored to meet customer requirements in construction and demolition to waste from energy production.

McCloskey Environment have listened to customers and have taken a strategic approach to focus on customer experience.

- Master product portfolio strategy
- Collaborative partnerships with key capabilities
- Global after sales and service support
- Sustainable operations - building resilient supply chain
- Exceptionally knowledgeable team - our people are committed to making a difference.

PROVIDING SMART WASTE MANAGEMENT SOLUTIONS



CONSTRUCTION



DEMOLITION



SOLID WASTE



WASTE ENERGY



COMMERCIAL
& INDUSTRIAL

GLOBAL AFTER SALES & SERVICE SUPPORT



SPARE PARTS AND MAINTENANCE KITS

McCloskey offers a full range of recommended spare part packages and maintenance kits. Speak to your dealer or your customer service representative about all the available options for shredder, screener and stacker ranges.

To keep your machine in peak condition, McCloskey Environmental offers a wide range of maintenance parts. Follow your machine's maintenance program to ensure productivity and uptime for peace of mind and extended machine life.



MAINTENANCE SUPPORT

McCloskey's Dealer Network ensures that customers are supported by factory trained field service technicians for After Sales Support. Extensive training is crucial to the proper maintenance of equipment. McCloskey's trained service technicians familiarize the operators handling the equipment to ensure customers receive as much use and value out of their purchase.



TECHNICAL SUPPORT & TRAINING

A comprehensive training program is available for all partners, service staff, equipping them with the correct skills, knowledge and practices to support you.

McCloskey Environmental hosts training events providing the latest product updates and training. Register your interest to book a tailored training program to suit you.



BEYOND THE STANDARD

MCE has a competitive warranty policy and warrants its new equipment to be free of defects in material for a specified period. Specific warranty details are available from your local distributor or by emailing technical aftermarket@mccloskeyinternational.com.



McCloskey Environmental

HEADQUARTERS

McCloskey Environmental
47 Moor Road, Coalisland, Co. Tyrone
BT71 4QB N. Ireland

(+44) 28 8774 0926

WORLDWIDE ENVIRONMENTAL

McCloskey Environmental
1 McCloskey Road, Keene, Ontario
K9J 0G6 Canada

+1 705-295-4925

**BUILDING SMARTER
EQUIPMENT TO HELP
MINIMISE THE WORLD'S
WASTE**

